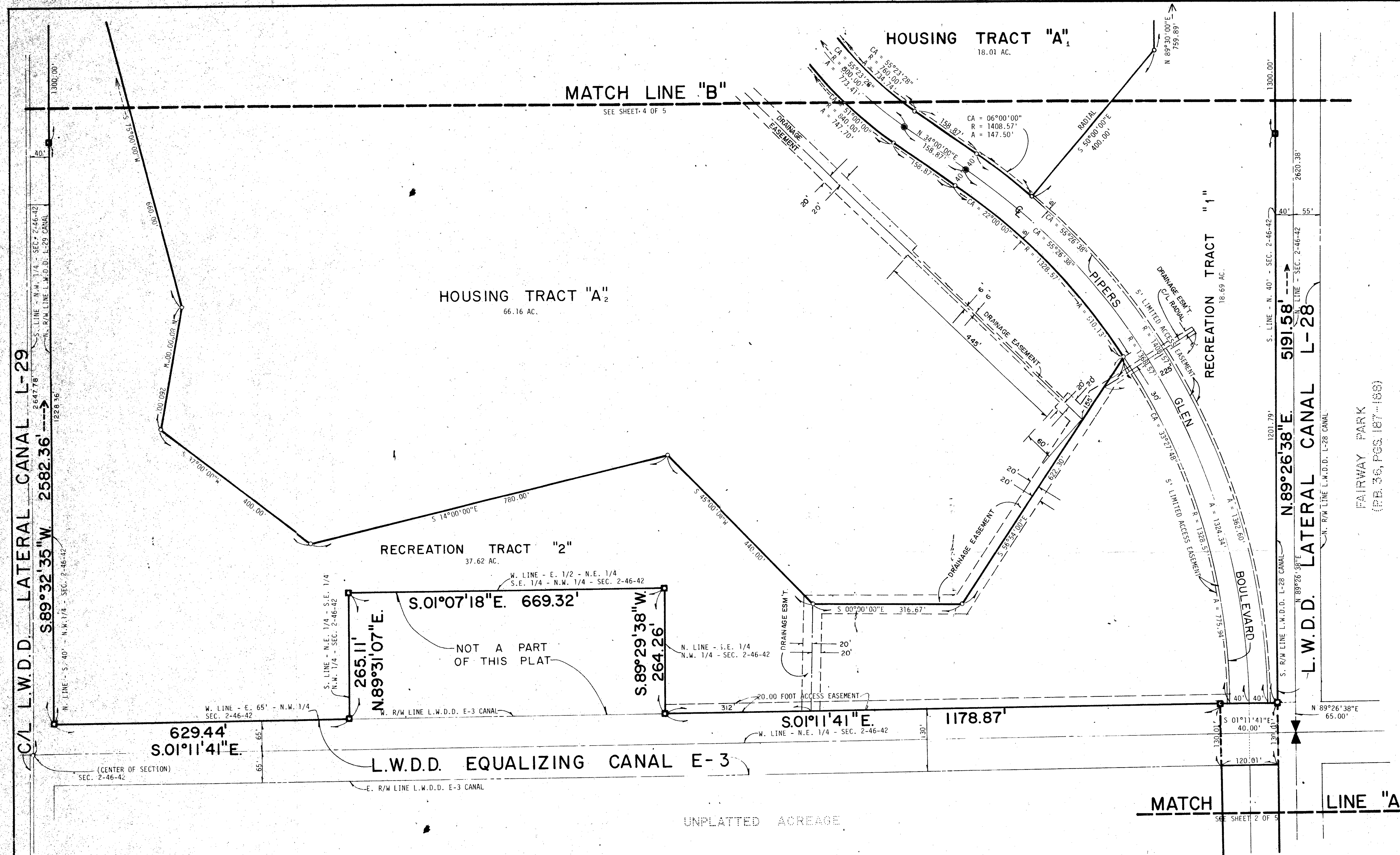


43/99



ACREAGE TABULATIONS:

HOUSING TRACT A1	18.01 ACRES
HOUSING TRACT A2	66.16 ACRES
HOUSING TRACT B	46.55 ACRES
HOUSING TRACT C	31.00 ACRES
RECREATION TRACT 1	18.69 ACRES
RECREATION TRACT 2	37.62 ACRES
RECREATION TRACT 3	33.51 ACRES
MAINTENANCE AREA (TRACT "M")	1.53 ACRES
COMMUNITY RECREATION CENTER (TRACT "R")	12.43 ACRES
COMMERCIAL COMMUNITY CENTER (TRACT "Y")	5.14 ACRES
GOLF CLUB (TRACT "G")	17.00 ACRES
WATER TOWER (TRACT "Z")	1.07 ACRES
TRACT "X" PIPER'S GLEN BOULEVARD	16.97 ACRES
TRACT "S"	2.39 ACRES
ROAD RIGHTS OF WAY JOG ROAD AND EL CLAIR RANCH ROAD	13.83 ACRES
ADD R/W-MILITARY TRAIL	0.01 ACRES
BOUNDARY PLAT TOTAL	321.91 ACRES

DENSITY TABULATIONS:

TOTAL AREA THIS PLAT	321.91 ACRES
TOTAL UNITS APPROVED	1566
DENSITY	3 UNITS PER ACRE

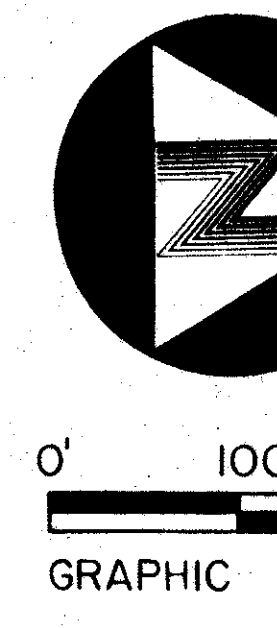
0298-001

Pipers GLEN #1

43/99

PIPERS GLEN PLAT NO. 1

STATE OF FLORIDA
COUNTY OF PALM BEACH
THIS PLAT WAS FILED FOR RECORD AT THIS DAY OF AND DULY RECORDED ON PAGES
JOHN B. DUNKLE, CIRCUIT COURT BY:



FAIRWAY PARK
(P.B. 36, PGS. 187-188)

BENCH MARK
land surveying and mapping

CONRAD W. SCHAEFER CONSULTING ENGINEERS
PALM BEACH COUNTY, FLORIDA

THIS INSTRUMENT WAS PREPARED BY ROBERT J. WHIDDEN, IN THE OFFICES OF BENCH MARK LAND SURVEYING AND MAPPING, INC., 2833 EXCHANGE COURT, WEST PALM BEACH, FLORIDA 33409